

SPF-SIG Priority Data Overview

NOTE: The following are selected pages from a presentation developed and presented by Montana's Addictive and Mental Disorders Division of the Department of Public Health and Human Services in September 2007. For additional information or questions, contact

Jackie Jandt

Planning and Outcome Officer, Chemical Dependency Bureau

Telephone: (406) 444-9656 or Email: jjandt@mt.gov

DATA SOURCES USED IN THIS PRESENTATION

Motor Vehicle Crashes:

- MT Data from DPHHS Office of Vital Statistics
- National Data from the Fatality Analysis Reporting System on the National Highway Traffic Safety Administration's website (www.fars.nhtsa.dot.gov/Main/index.aspx)

Underage Binge Drinking, Underage Drinking & Driving, HS Students Riding in a Car Driven by Someone Drinking:

- MT Data from YRBS reports on OPI's website (www.opi.state.mt.us/YRBS/)
- National Data from YRBS reports on the CDC's website (www.cdc.gov/HealthyYouth/yrbs/index.htm)

Adult Binge Drinking - BRFSS:

- MT Data from DPHHS BRFSS' website (www.brfss.mt.gov)
- National Data from BRFSS reports on the CDC's website (www.cdc.gov/brfss/)

SPF-SIG Priority Data Overview

Community Needs Assessment

101001010100111101000010010111010010 110101010101110100001000010001001
00100001010010100100101000010101001010100001111010010101001110100001001011010010
110101010101110100001000010100101001001010000101101001010100001111010010101

September 5, 2008

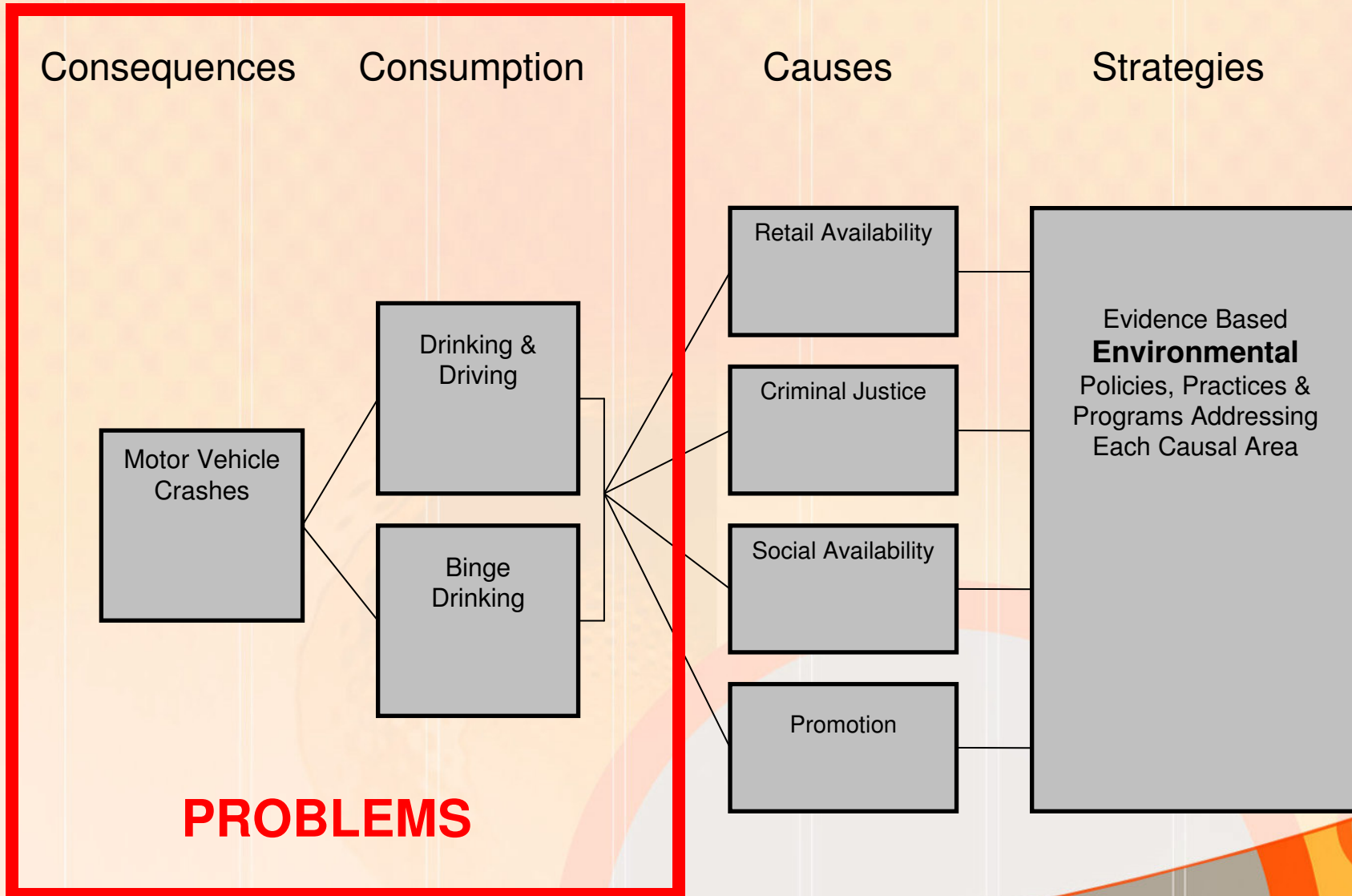
Final Recommendations of SEW

- *Primary Target*
 - *Binge drinking with an emphasis on underage binge drinking. Binge drinking refers to having five or more drinks on any one occasion.*
- *Areas of Concern*
 - *Drinking and driving with an emphasis on teenagers and young adults. This is based on the fact that not only are students and adults binge drinking but they are getting in cars and being injured or killed and injuring and killing others.*

Community Needs Assessment Workbook Purpose

- *Help MT communities go through the outcome-based prevention model*
- *Complete a comprehensive needs assessment for each county in their community*
- *Accurately assess identified problems*
- *Research local data to understand what environmental factors may influence these problems*

Outcome-Based Prevention Model



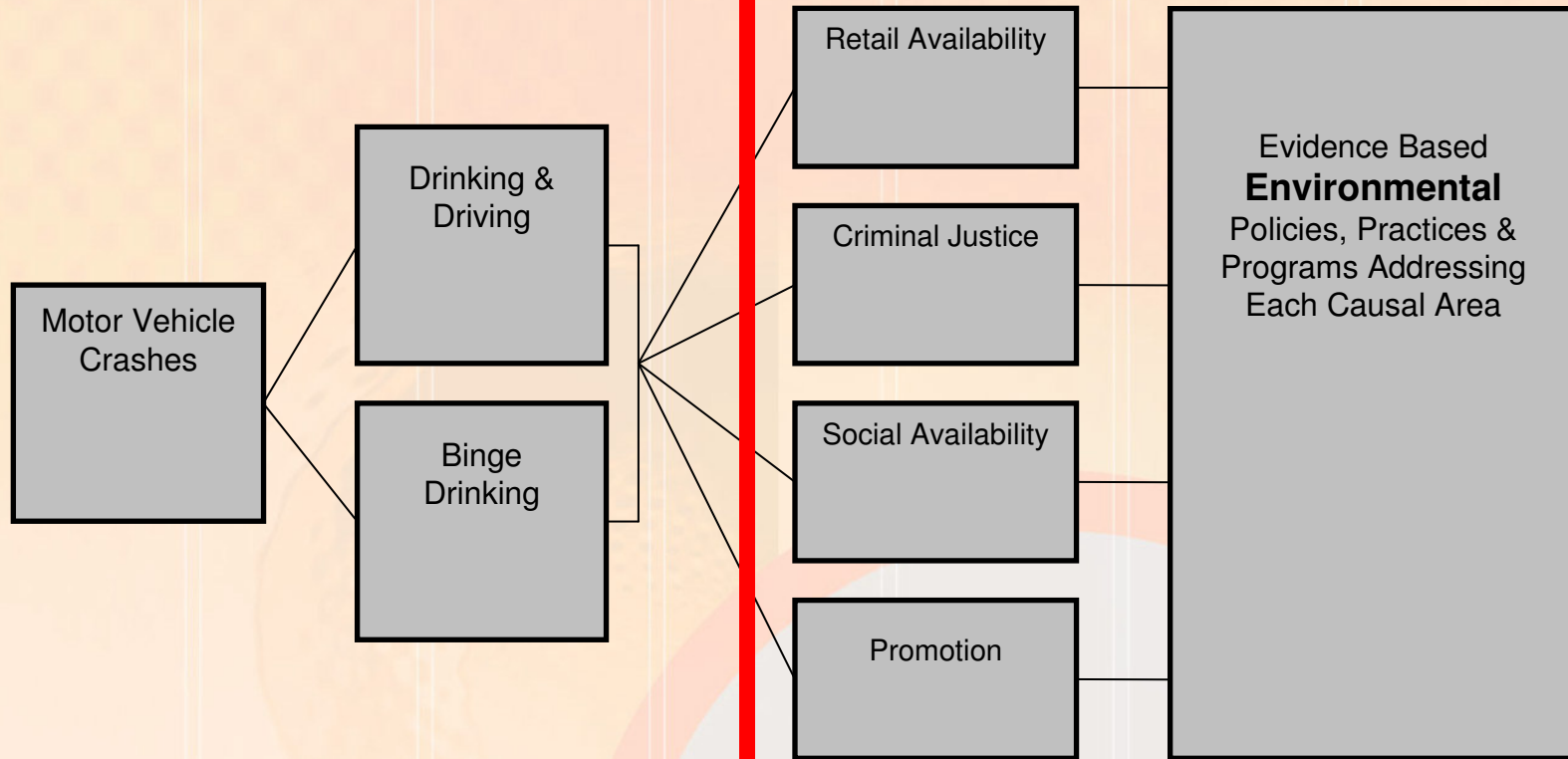
Outcome-Based Prevention Model

Consequences

Consumption

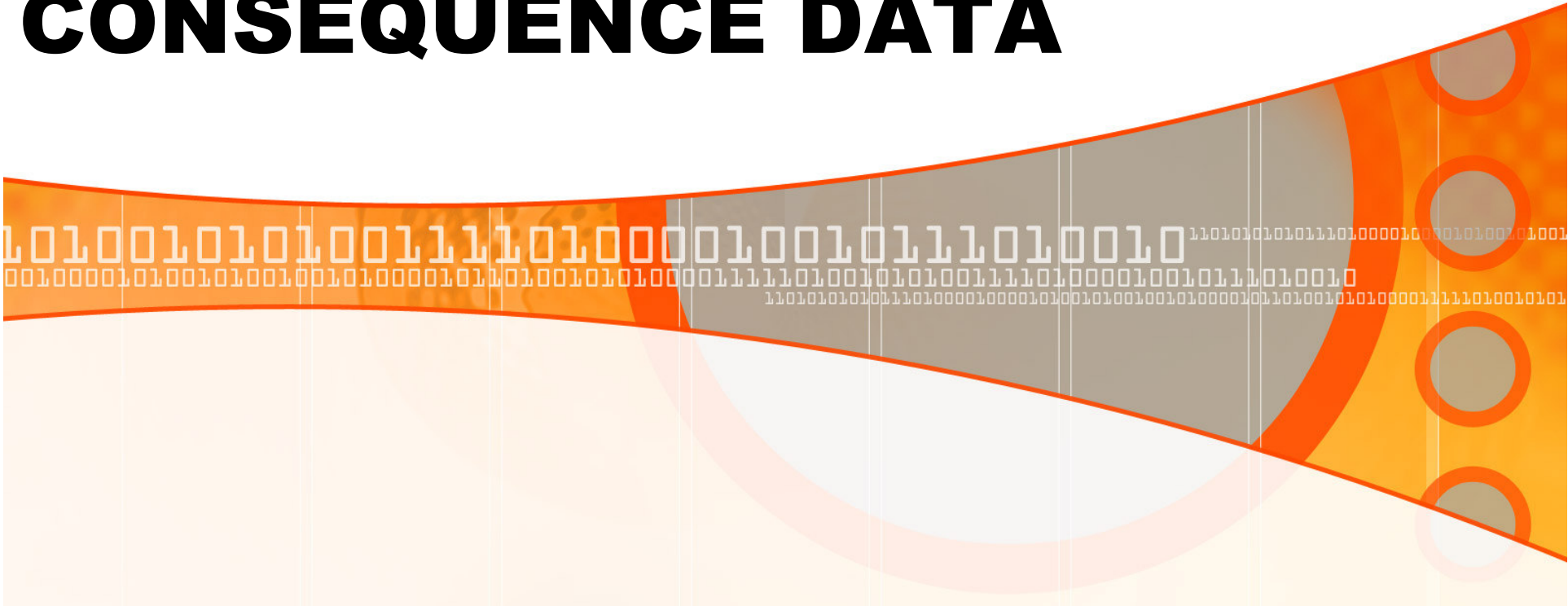
Causes

Strategies



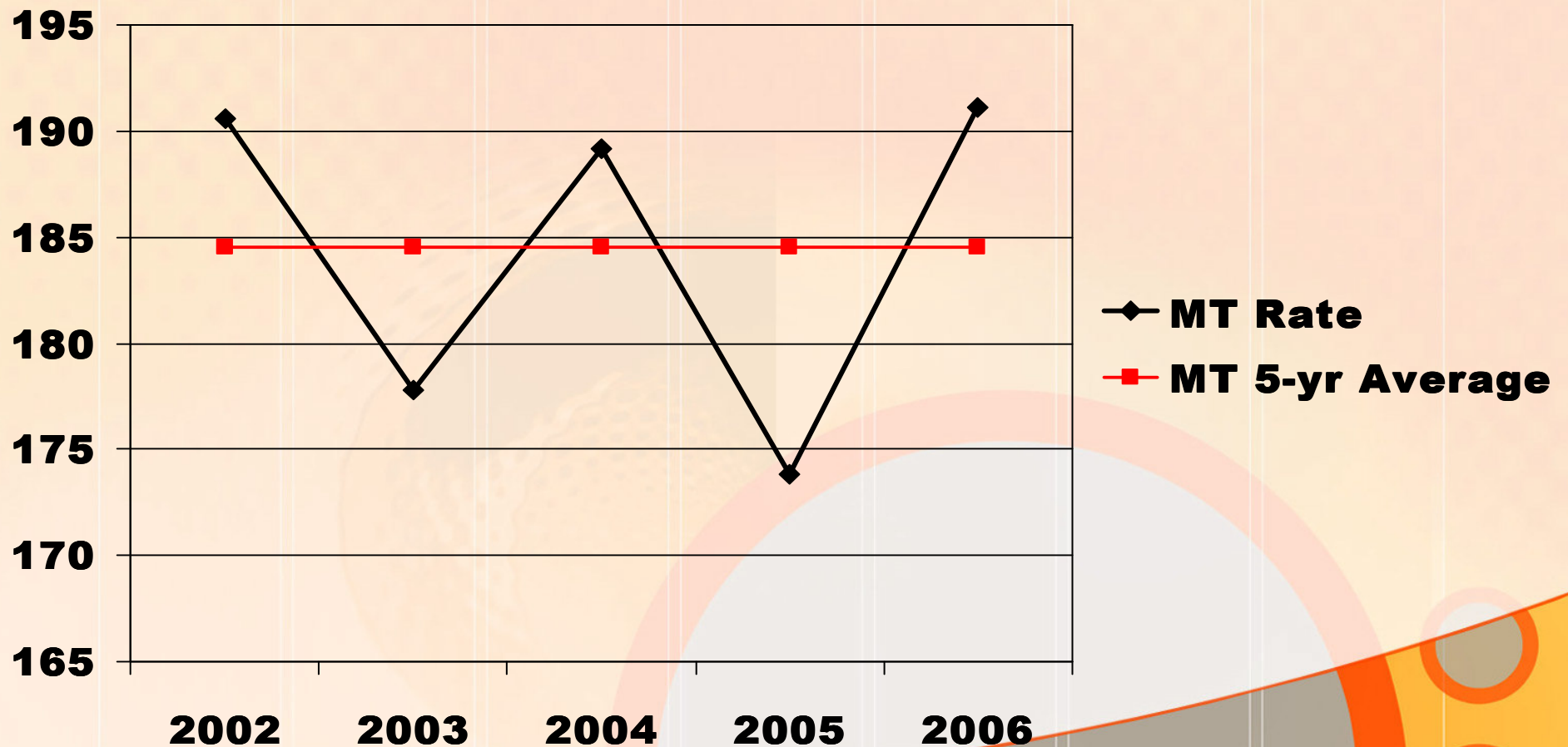
IPS to provide training

CONSEQUENCE DATA



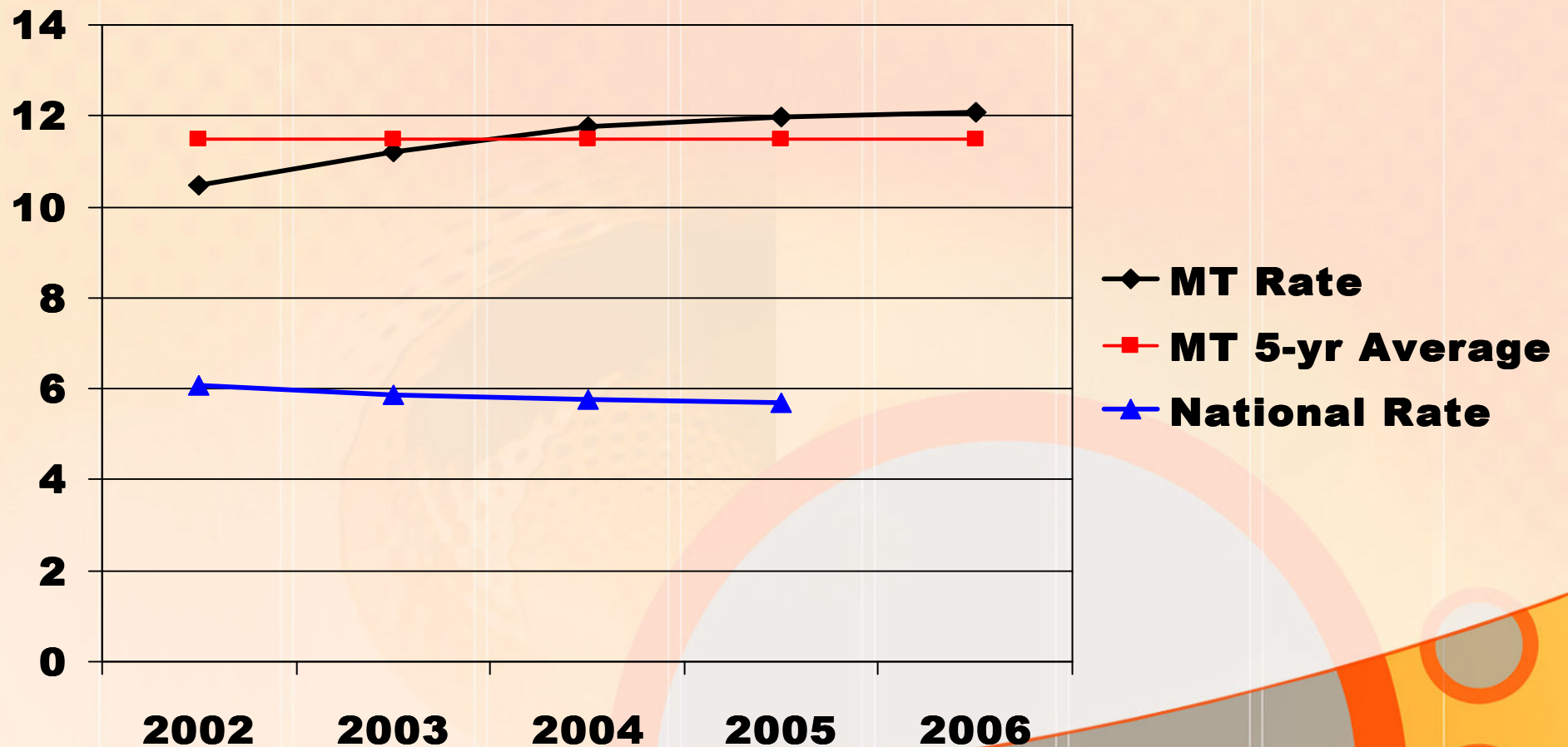
Motor Vehicle Crashes

- *Alcohol-Related Crashes with Injuries for All Races, Rate per 100,000 Population (DPHHS Vital Statistics)*



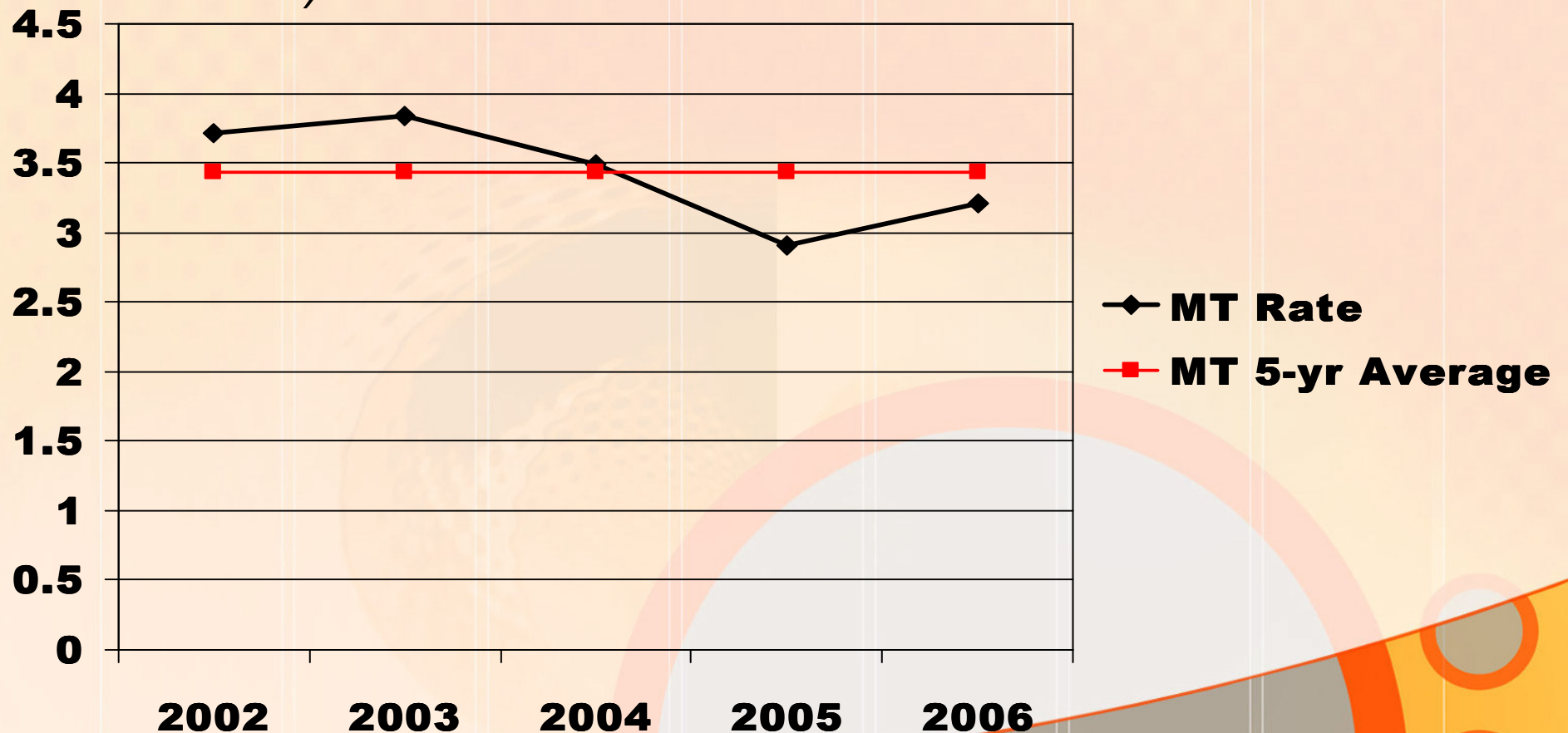
Motor Vehicle Crashes

- *Alcohol-Related Crashes with Fatalities for All Races, Rate per 100,000 Population (DPHHS Vital Statistics)*



Motor Vehicle Crashes

- *Alcohol-Related Crashes with Fatalities for American Indians, Rate per 100,000 Population (DPHHS Vital Statistics)*



CONSUMPTION DATA



Consumption Data

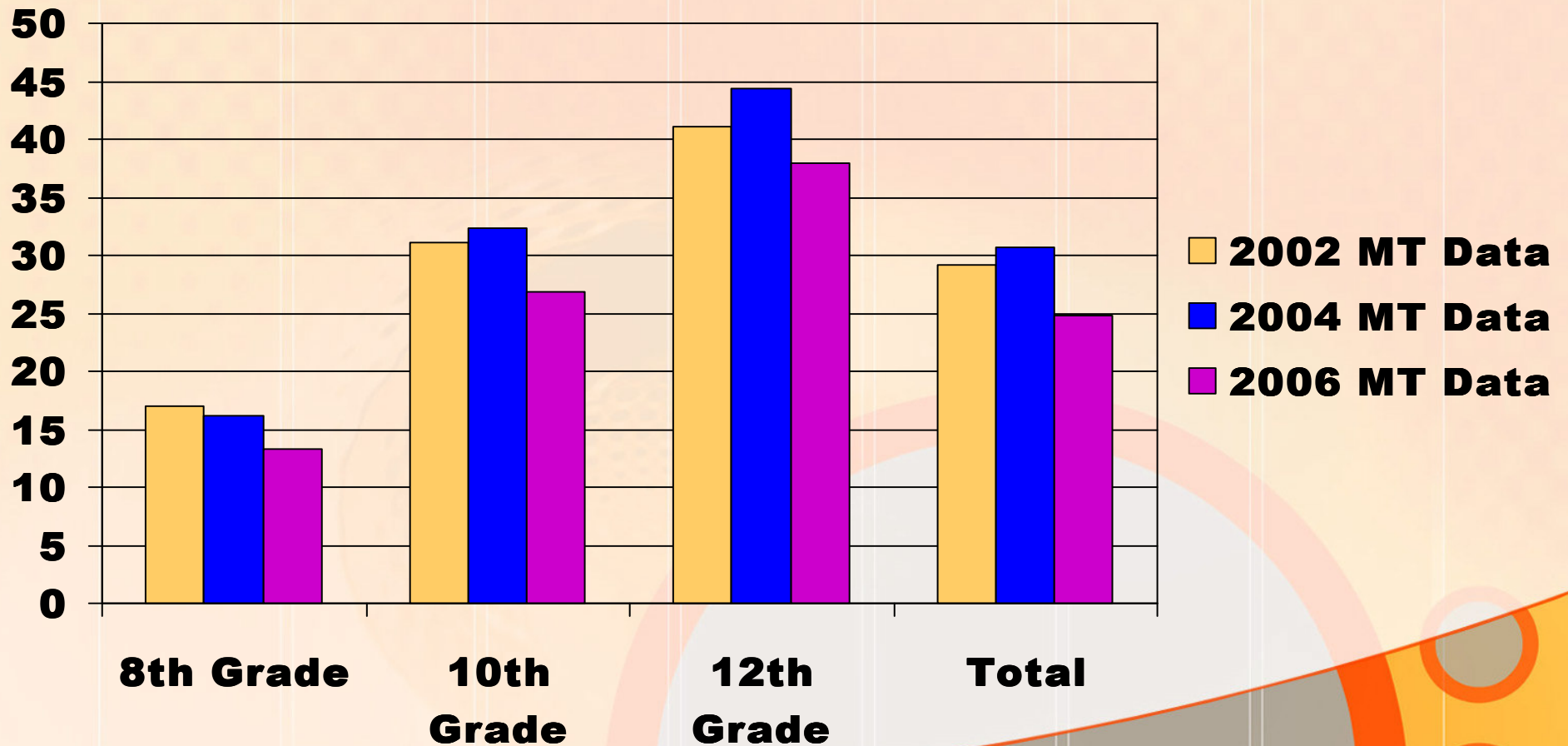
- *Underage Binge Drinking*
- *Adult Binge Drinking*
- *Underage Drinking and Driving*
- *HS Students Riding in a Vehicle Driven by Someone Drinking*

Underage Binge Drinking

- *Percentage of Students Binge Drinking in Past Two Weeks for All Races (PNA)*
- *Percentage of Students Binge Drinking in Past Two Weeks for American Indians (PNA)*
- *Percentage of Students Binge Drinking in Past 30 Days for All Races (YRBS)*
- *Percentage of Students Binge Drinking in Past 30 Days for American Indians (YRBS)*
- *Other Local Data*

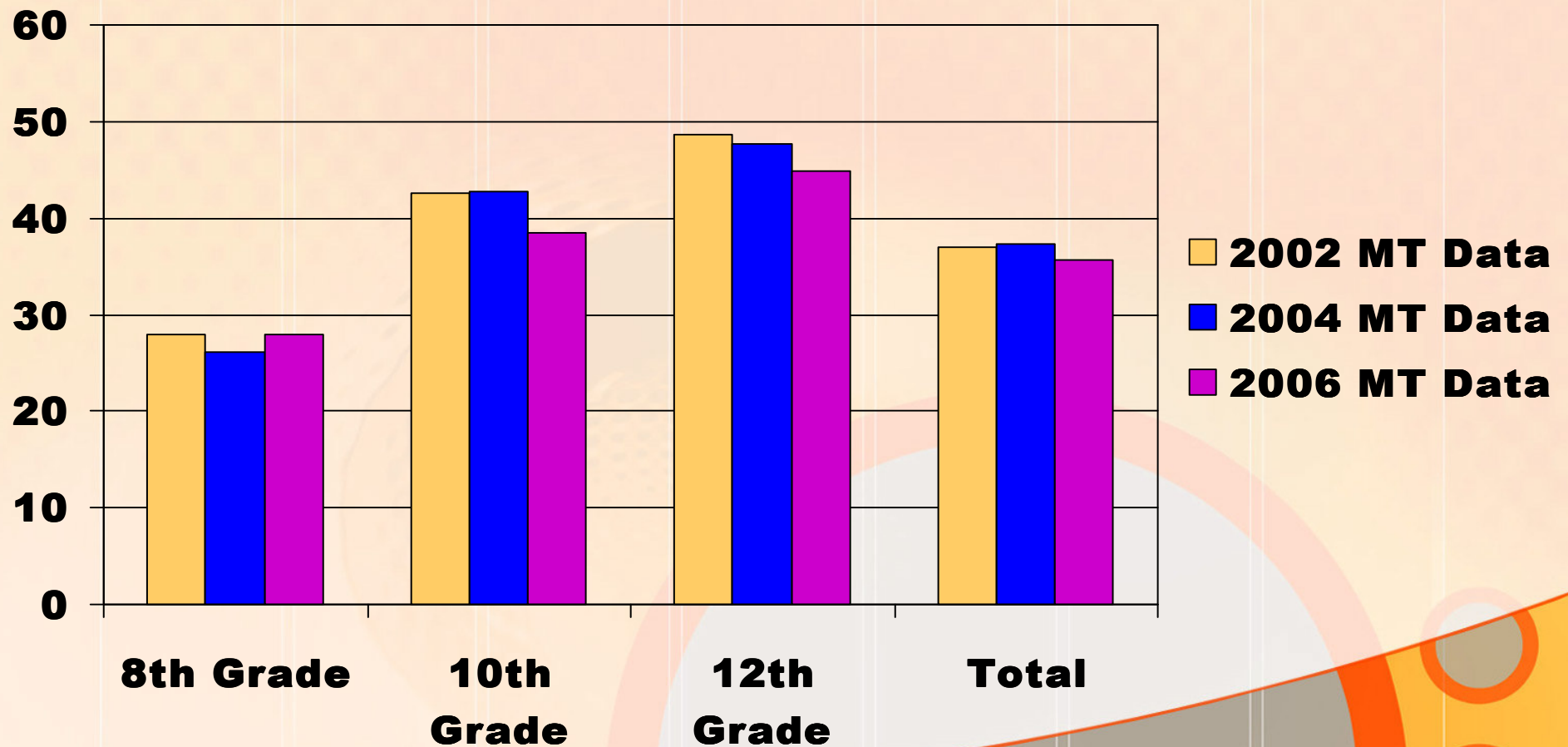
Underage Binge Drinking - PNA

- Percentage of Students Binge Drinking in Past Two Weeks for All Races*



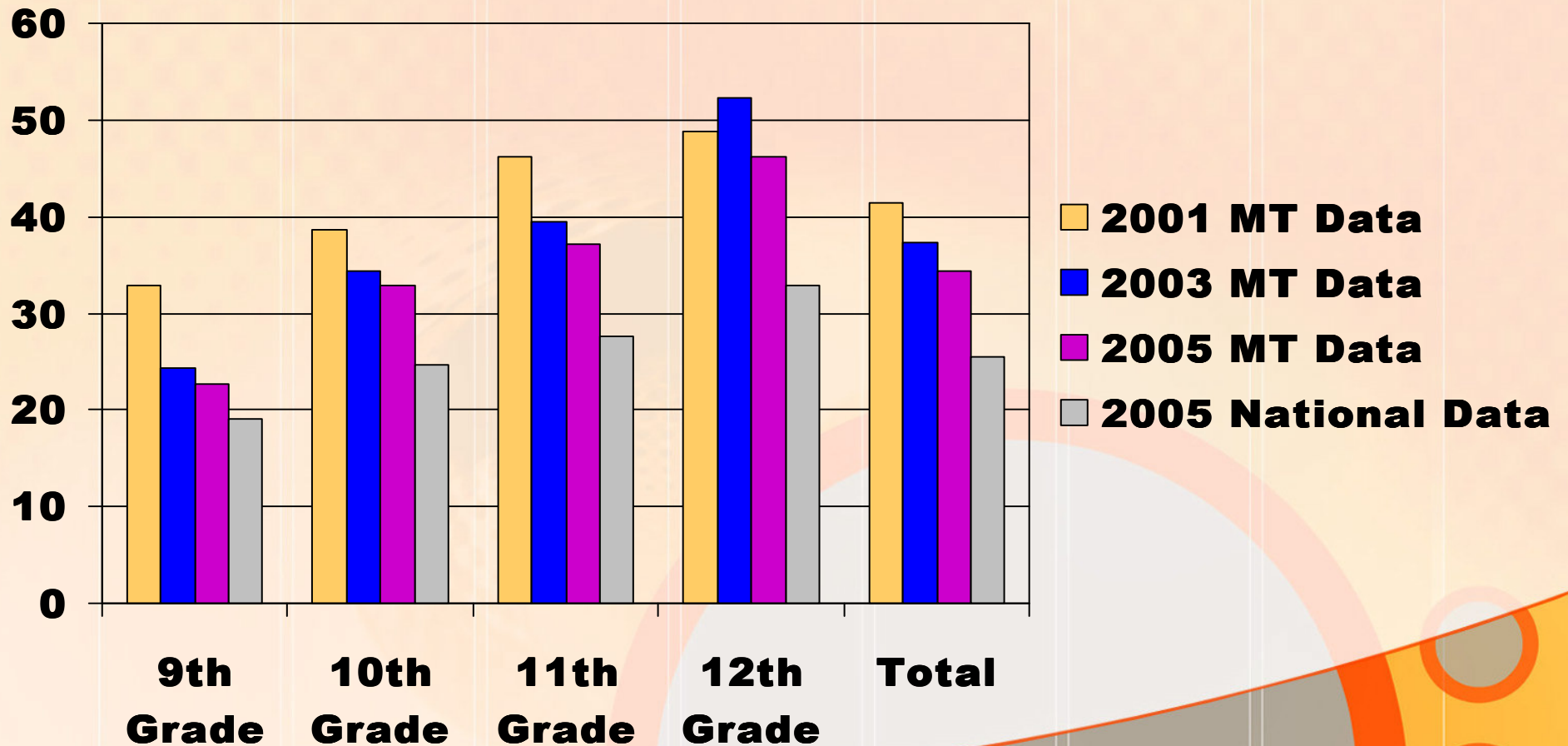
Underage Binge Drinking - PNA

- Percentage of Students Binge Drinking in Past Two Weeks for American Indians*



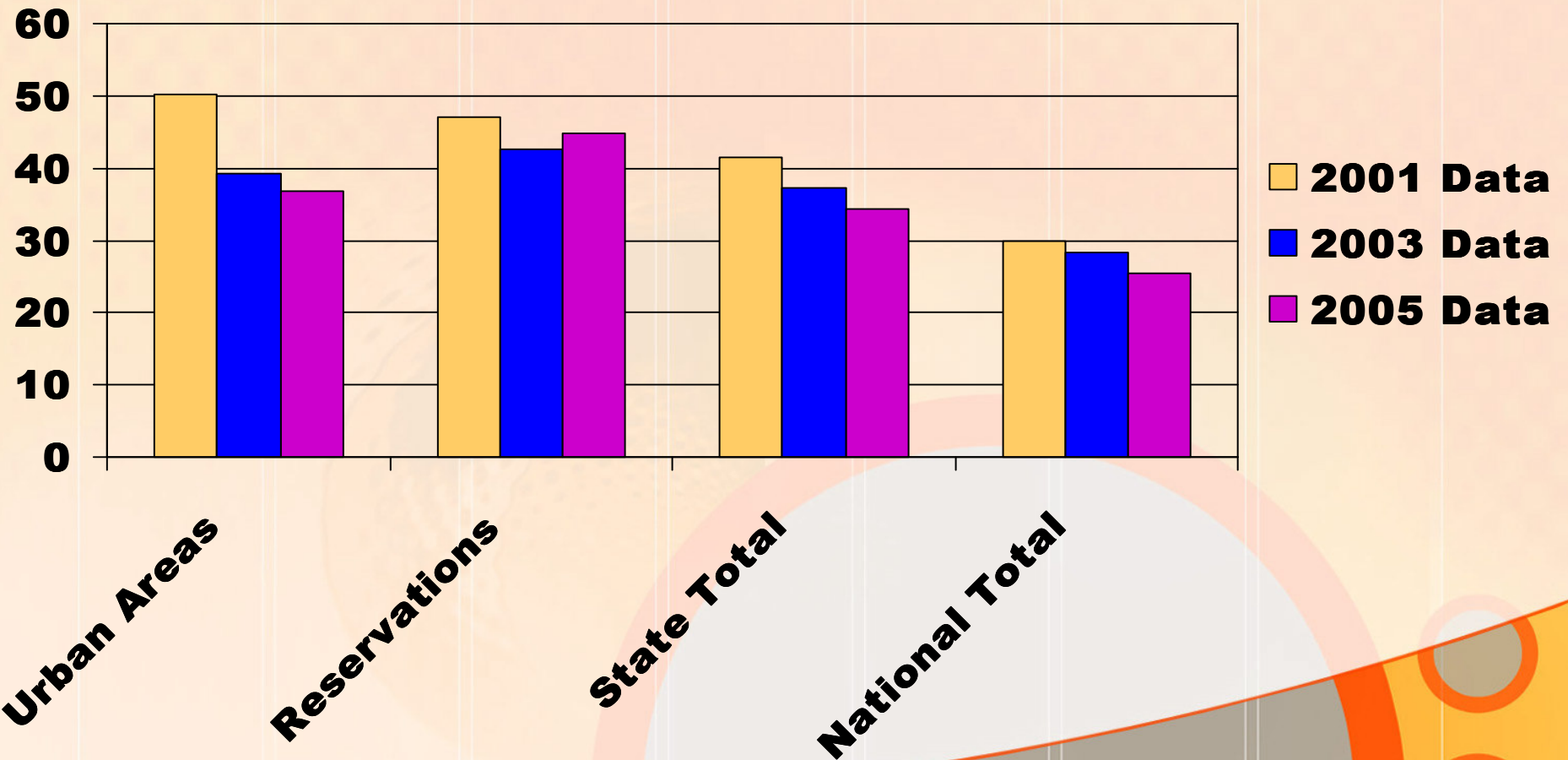
Underage Binge Drinking – YRBS

- Percentage of Students Binge Drinking in Past 30 Days for All Races*



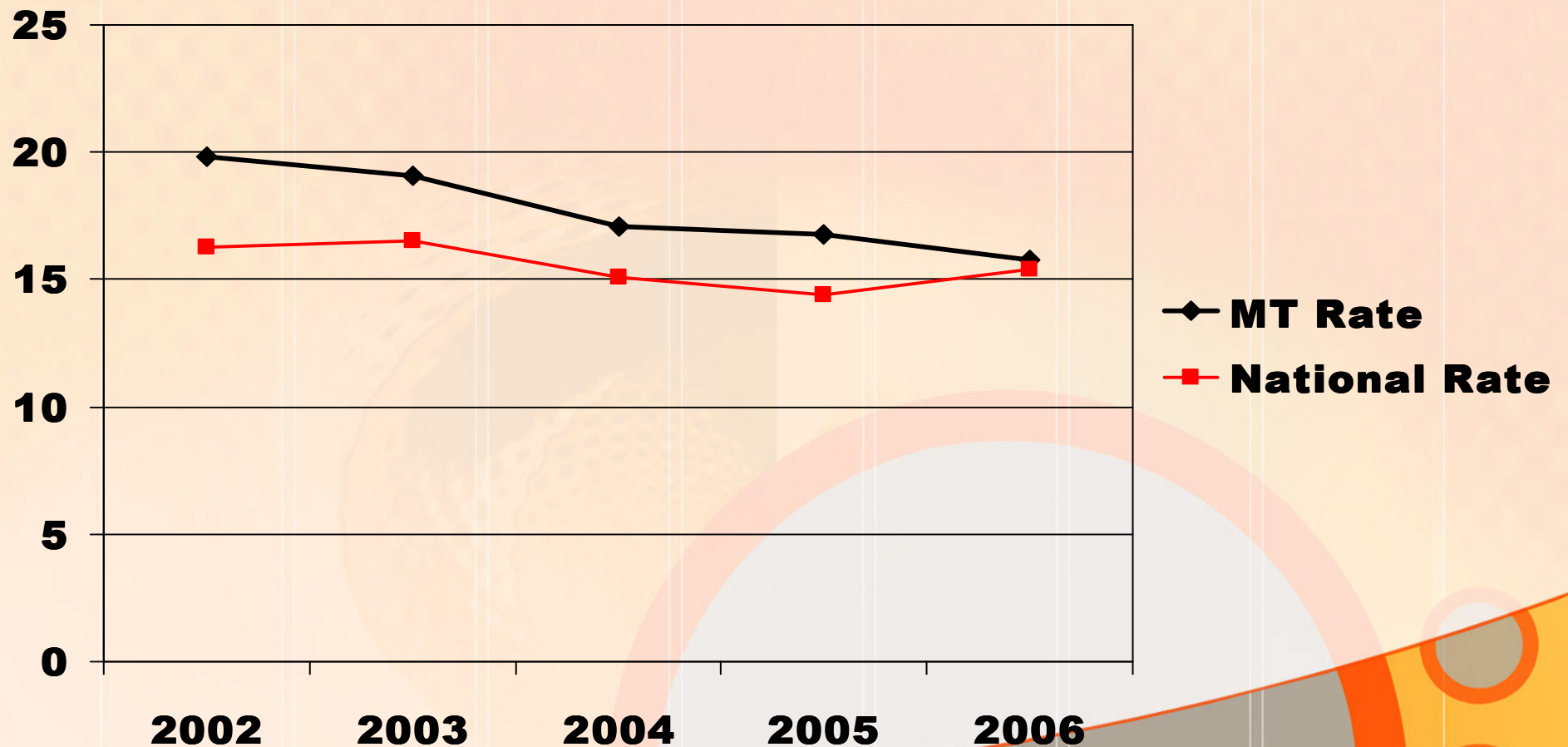
Underage Binge Drinking – YRBS

- Percentage of Students Binge Drinking in Past 30 Days for American Indians*



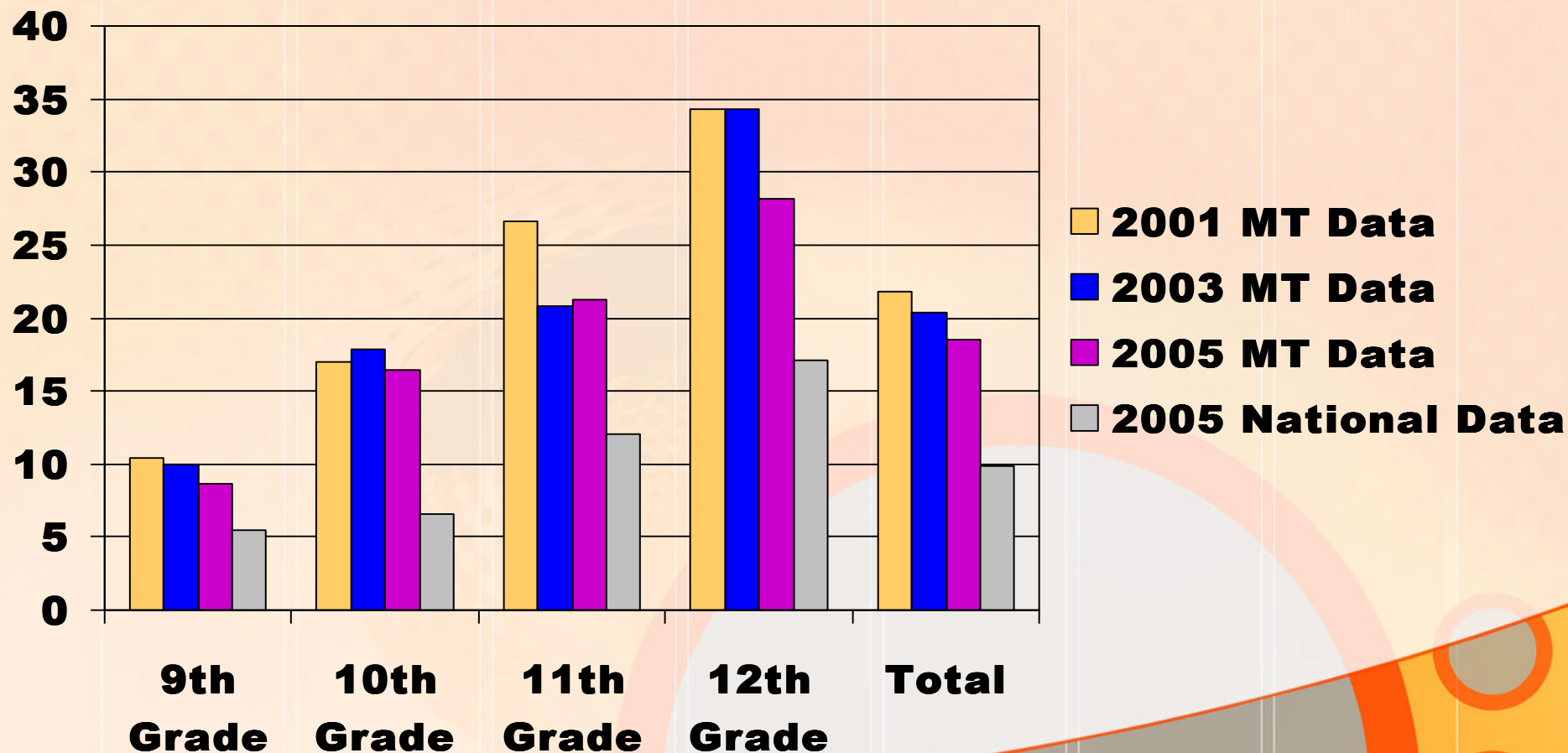
Adult Binge Drinking

- Percentage of Respondents Age 18 and Older Binge Drinking in Past 30 Days for All Races (BRFSS)*



Underage Drinking & Driving – YRBS

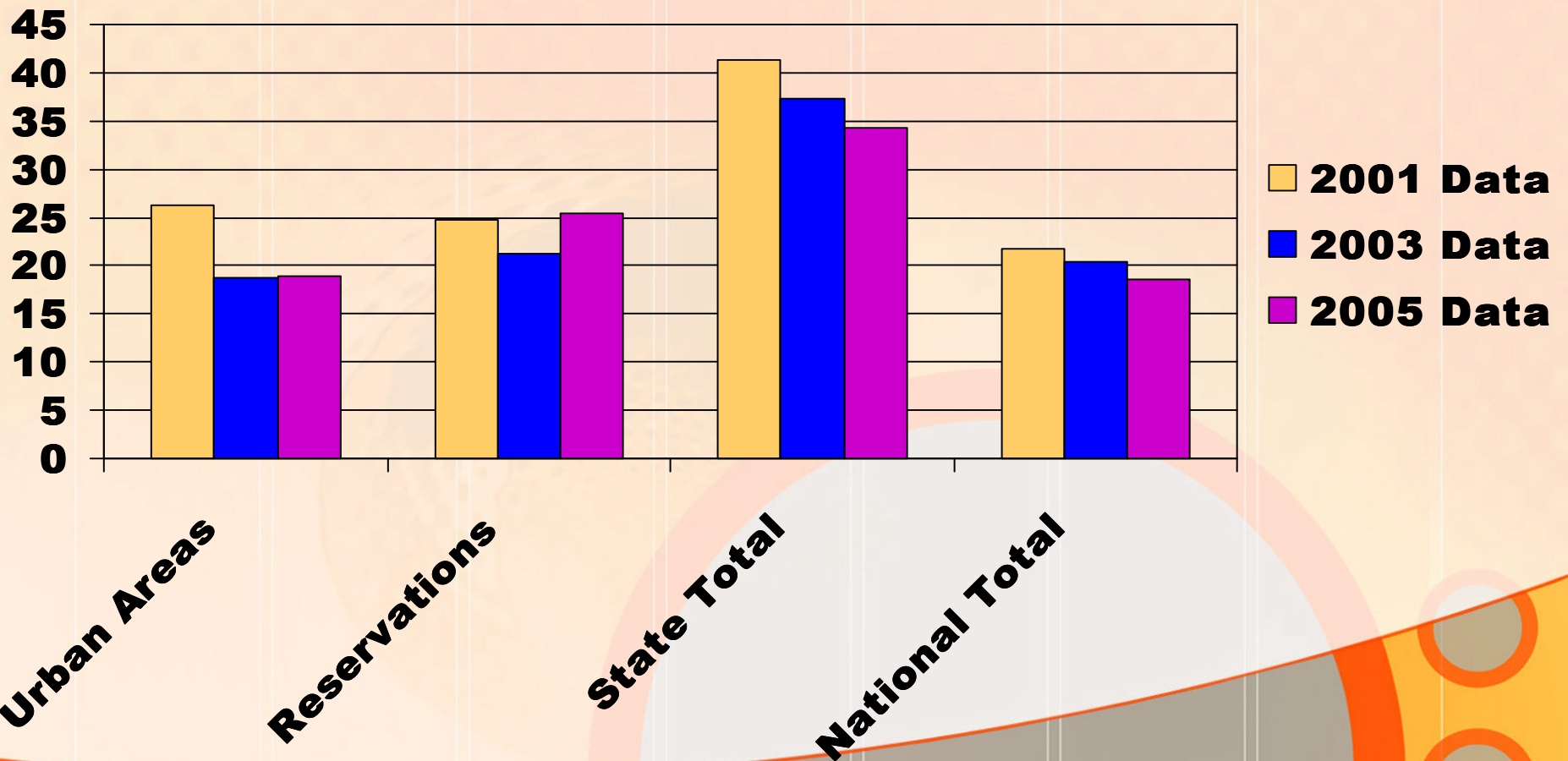
- Percentage of Students Who Drove a Vehicle When They Had Been Drinking Alcohol During the Past 30 Days for All Races



Underage Drinking & Driving –

YRBS

- Percentage of Students Who Drove a Vehicle When They Had Been Drinking Alcohol During the Past 30 Days for American Indians*



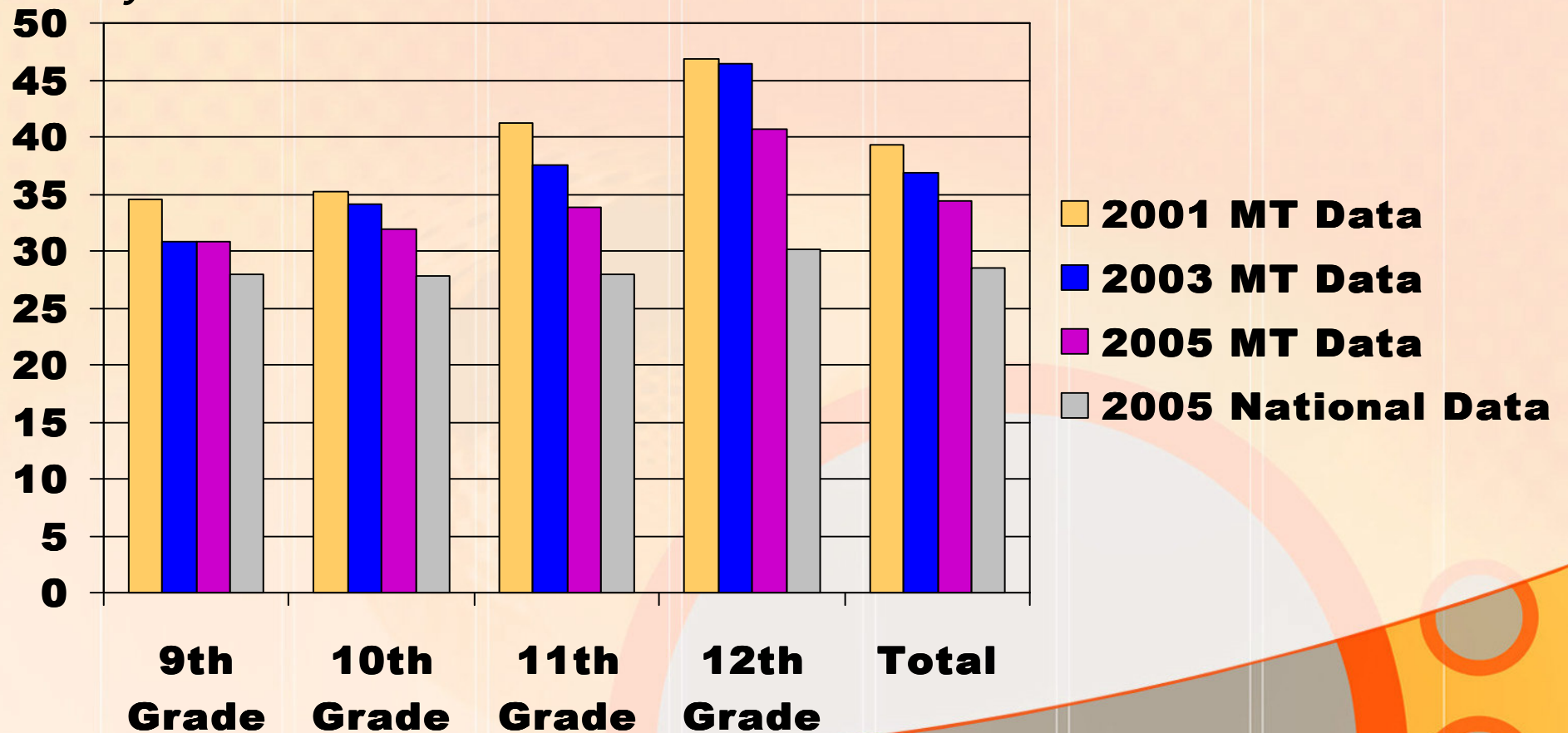
Underage Drinking & Driving - YRBS

- *Data should be obtained from your schools*
- *Reassure schools the data will not be provided to general public with school-identifying markers, will be combined with other schools in community for total community picture*
- *Drawback: not all schools participate*

HS Students Riding in a Car Driven by Someone Who Had Been Drinking Alcohol During the Past 30 Days for All Races

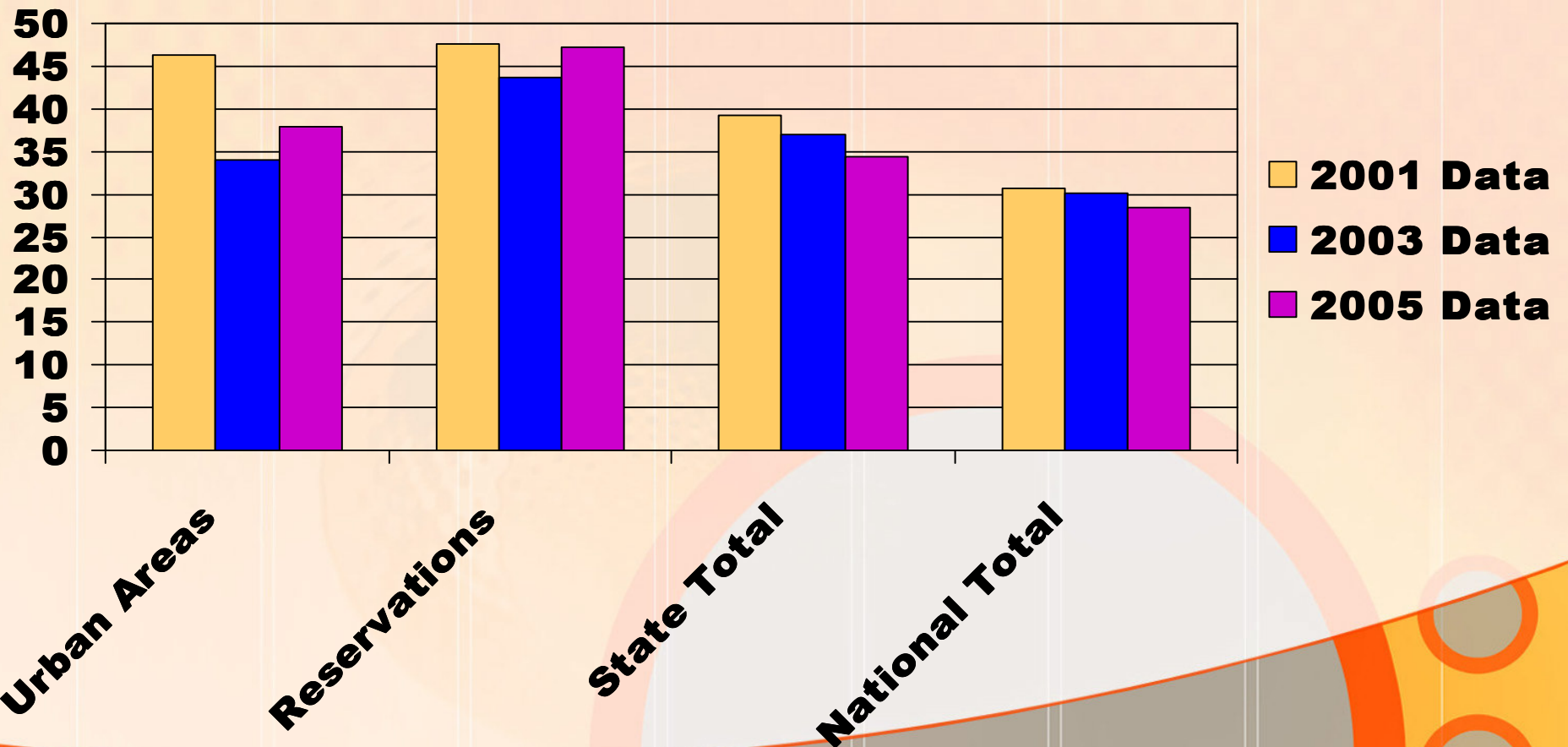
by Someone Drinking – YRBS

- Percentage of Students Who Rode in a Vehicle Driven by Someone Who Had Been Drinking Alcohol During the Past 30 Days for All Races



HS Students Riding in a Car Driven by Someone Who Had Been Drinking Alcohol During the Past 30 Days – YRBS

- *Percentage of Students Who Rode in a Vehicle Driven by Someone Who Had Been Drinking Alcohol During the Past 30 Days for All Races*



Questions?

